

# Forms Printer Upgrade Guide

*for Dynamics GP 2016*

## Forms Printer Build

Version: 16.00.149

## System Requirements

Microsoft Dynamics GP 2016  
(desktop client, web client)

Microsoft SQL Server 2005 or Higher

Reporting Services 2005 or Higher with  
Report Manager for SQL Reporting Services  
functionality

or

Crystal Reports Version 9.0 or Higher

## Contact Us

For more information, pricing details or  
to schedule a demo, please contact us  
at:

Sales:

- 610.983.3100 option: 1
- [sales@accountable.com](mailto:sales@accountable.com)
- [www.accountable.com](http://www.accountable.com)

## A Guide for Upgrading to the Current version of Forms Printer Base System, Forms Printer for Project Accounting and Forms Printer Plus

## Table of Contents

Forms Printer Upgrade Process .....	3
Upgrading Forms Printer.....	3
Upgrading Client Installations.....	3
Upgrading the SQL Server Database .....	4
Converting E-mail From Setup .....	5
Upgrading Reports to the Current Dynamics GP Database Version .....	5
Upgrading Crystal Reports Database Definitions.....	5
Upgrading Crystal Reports .....	6
Project Accounting Sample Forms .....	8
For Microsoft Dynamics™ GP Version 10 and Higher .....	8
For Great Plains Version 6.0, 7.0 and 7.5, 8.0.....	8

## Forms Printer Upgrade Process

This document provides the necessary steps for upgrading previous versions of Forms Printer to the current version including upgrading from previous version of Forms Printer Base System to Forms Printer Plus. A complete upgrade includes upgrading the Forms Printer client application and database, upgrading reports to the current Dynamics GP database version, and upgrading reports to include any Forms Printer changes.

Note: This process assumes that the Microsoft Dynamics™ GP core system has been successfully upgraded following all of the recommended upgrade procedures.

### Upgrading Forms Printer

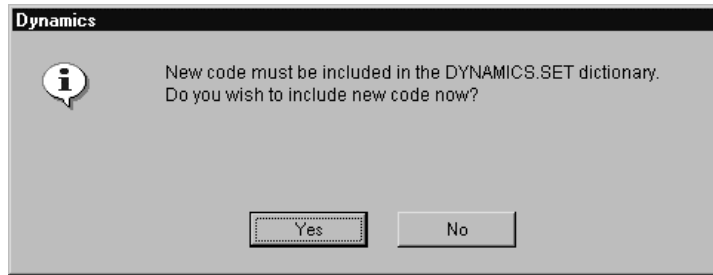
The upgrade of Forms Printer includes the installation of client code, the upgrade of objects in the SQL Server database, and the entering of new registration keys. It is recommended that each Dynamics GP Company database as well as the DYNAMICS systems database is fully backed up prior to performing any of the upgrade steps.

### Upgrading Client Installations

Complete the following steps to upgrade the Forms Printer installation on each Dynamics GP client machine:

1. Following the upgrade of your Dynamics GP application, navigate to the Dynamics GP Client Application folder using Window Explorer.
2. Find the **two** Forms Printer dictionary files named **FPD1230.DIC** and **ASI1655.DIC**, and delete these files.
3. Run the Forms Printer installation using the downloaded Forms Printer installation file.  
*\*\*Checking our web site for the most current version of the product before installation ensures that any updates or fixes are installed and is highly recommended.*
4. Follow the installation wizard to complete the installation of Forms Printer.
5. Launch Microsoft Dynamics™ GP and log in as 'sa' or a database administrator. A dialog window prompting to include the new code will be displayed, as shown in the following illustration

Click **Yes**, and wait until the process has completed.



6. Repeat these steps on each Dynamics GP Client workstation.

### Upgrading the SQL Server Database

The SQL Server Database upgrade process varies depending on which Forms Printer version you are upgrading from.

#### **If upgrading from any version of Forms Printer for GP2016, or from build 133 or higher of Forms Printer for GP2013 or GP2015:**

Your system will do an **All Companies, Light Conversion** to build 149. This new conversion method will automatically make the SQL table changes to all companies without having to repeat the upgrade steps as described below. This means you do not need to log into each company to complete the upgrade.

#### **If upgrading from any version earlier than build 133:**

After the new code is loaded, you must update the SQL Server Database using the steps below and you must repeat this database upgrade for each Dynamics GP Company by logging into each company and repeating the steps:

1. When prompted with the dialog window prompting to initialize and/or upgrade **Custom Report Integration** tables click **Yes** to initialize the new tables.
2. When prompted with the dialog window prompting to initialize and/or upgrade **Forms Printer** tables click **Yes** to initialize the new tables.
3. If running the Project Accounting module, you will be prompted with the dialog window asking to initialize and/or upgrade **Project Accounting** tables click **Yes** to initialize the new tables.
4. You will be presented with the message to enter registration keys. Click **Yes** to open the Forms Printer Registration window. Enter the registration keys you received from Accountable Software for your Microsoft Dynamics™ GP installation.

**Once you have initialized tables and entered your registration keys, you will not be prompted for these steps on subsequent workstations.**

## Converting E-mail From Setup

After converting the database, you may optionally convert the Forms Printer E-mail From Setup by opening the E-mail From Setup window from Forms Printer Setup.

Historically, the E-mail From list, available during 'To E-mail' Delivery Setup, was saved to and modified in the Dex.ini file on each local workstation that accessed Forms Printer Setup.

With the release of build 149, you now have the option to maintain those values in the E-mail From Setup window and save them to the database rather than to the local workstation's Dex.ini file. Use the information in the Forms Printer User Guide to complete the conversion.

## Upgrading Reports to the Current Dynamics GP Database Version

When installing a new version of Forms Printer and / or Dynamics GP, database changes may have occurred. These database changes may affect tables used in your reports. In order upgrade your reports to account for these changes, you must use your Reporting tool to look for and make needed changes. Follow the steps below to upgrade reports for your reporting tool.

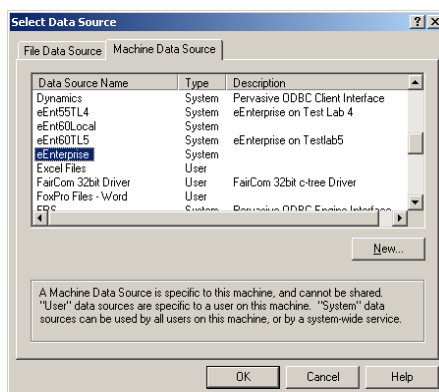
### Upgrading Crystal Reports Database Definitions

When using Crystal Reports, database changes can be identified and corrected using the Verify Database process.

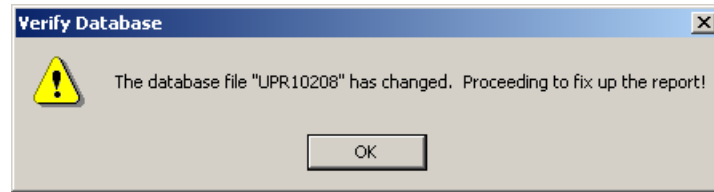
This process is required to upgrade any existing Crystal reports you may have in use. All sample reports installed with Forms Printer have already been modified to work with the current version of Microsoft Dynamics™ GP and Forms Printer.

**Note: It is recommended that you make a backup copy of each report before beginning the upgrade process.**

1. Open each Crystal Report individually with Business Objects Crystal Reports.
2. From the toolbar, select **Database >> Verify Database**.
3. From the Select Data Source window, select the DSN created for Forms Printer, as seen in the following illustration, then click **OK**.



4. If using Microsoft SQL Server, when prompted, enter a valid User Name and Password. Click the Options button, select a **Company** Database and click **OK** as shown in the following illustration. You will be prompted with the following message, where "UPR10208" will be the name of the table that has changed.



5. Click **OK** for each Verify Database message box that opens.
6. When finished, save each report with these changes.

## Upgrading Crystal Reports

The upgrade from versions prior to 10.50 of Forms Printer includes several major changes that may include new tables, new report restrictions and new parameters.

With the exception of Project Accounting reports, there has been at least 1 critical change to every report used by Forms Printer.

**Prior to using any existing reports that were used with versions earlier than Forms Printer 10.50, they MUST be upgraded to incorporate Forms Printer changes for 10.50 and above.**

To upgrade reports, follow the steps below:

1. Open each report one at a time in Crystal Reports.
2. Open the matching sample report installed with the latest version of Forms Printer.

**NOTE:** Make sure you are using the samples installed the latest version of Forms Printer. The Template reports are installed by the Forms Printer installer into various series subfolders, under the following subfolders of the Dynamics GP Application Folder:

*[Dynamics GP Application Folder]\Forms Printer\Crystal Report Templates*

3. Add Tables  
Use the Crystal Reports Database > Database Expert window to view the tables included and joins used on each report. Duplicate these changes by adding any new tables detailed.
4. Set Parameters  
Use the same process of either report comparison or documentation details to examine the report parameters. When setting parameters be sure that:
  1. The total number of report parameters on the report matches the Forms Printer requirement.
  2. Each parameter is of the correct data type as required by Forms Printer.

3. The parameter order is correct as required by Forms Printer.
5. **Verify Selection Criteria**  
Use the same process of either report comparison or documentation details to examine the report selection criteria and ensure that any new restrictions are applied.

## Project Accounting Sample Forms

### For Microsoft Dynamics™ GP Version 10 and Higher

NOTE: with the incorporation of Project Accounting PO functionality into the normal Microsoft Dynamics™ GP Purchase order Window, the PA Specific PO reports for Blank and Other formats are no longer used. The Blank and Other PO's are printed with the Crystal Reports set up in the "Purchasing Series" of Forms Printer Setup, the PA PO Format A, B and C are still set up in the Project Series.

Otherwise, only minor table changes have been made to Project Accounting tables used by Forms Printer in these versions. To upgrade your Forms Printer Project Accounting reports, follow the Crystal Reports documentation for the 'Verify Database' functionality. You may have to Map some old Fields that have changed names in Project Accounting 9.0 to their new names.

### For Great Plains Version 6.0, 7.0 and 7.5, 8.0

Only minor table changes have been made to Project Accounting tables used by Forms Printer in these versions. To upgrade your Forms Printer Project Accounting reports, follow the Crystal Reports documentation for the 'Verify Database' functionality.