

# ACCOUNTABLE SOFTWARE PRODUCTS FOR DYNAMICS SL

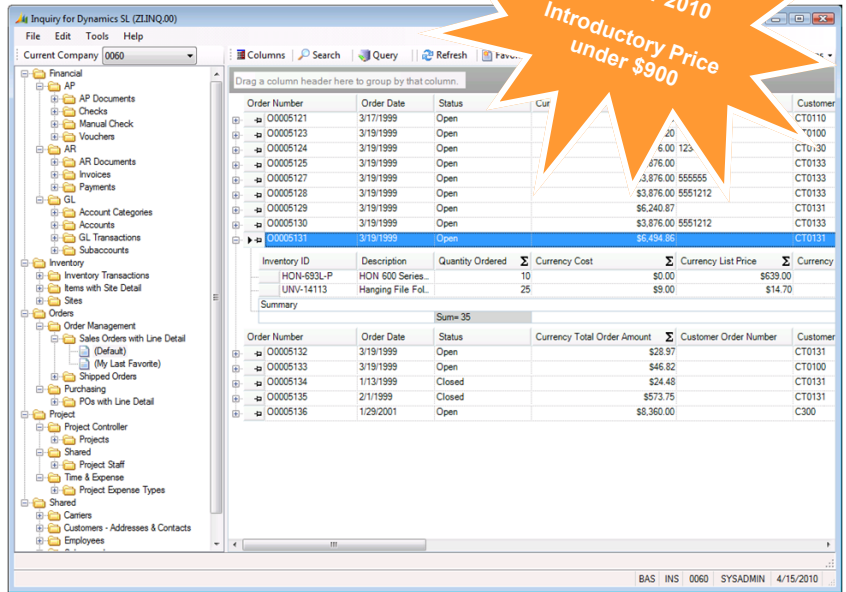
## INQUIRY for Dynamics SL



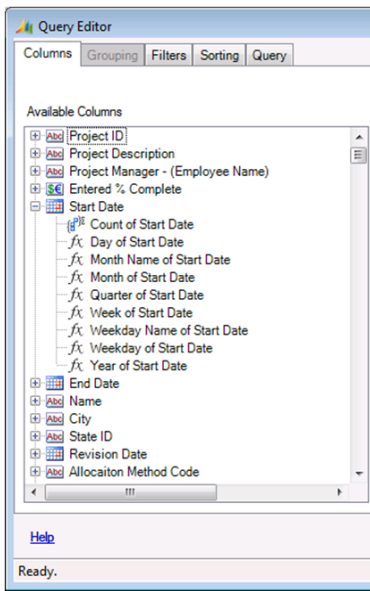
**INQUIRY for Dynamics SL** is an **ad-hoc query** product designed for use by users at all levels of your organization. The **intuitive features** help users successfully find the answers they need. **Fully integrated** into Dynamics SL security, **INQUIRY** displays **friendly names** of fields, tables and query names to make using and building queries easy and allows users to **drill down and around** directly into the Dynamics SL screens displaying the source of query results. Queries based on **tables, views and stored procedures** give query designers power and flexibility.

Whether using the set of **20 plus starting inquiries** spanning most of the SL modules, or using the **INQUIRY Builder** to create custom queries, report designers have the ability to **access data from Dynamics SL and other databases** in their systems.

With a robust and intuitive interface offering powerful end user functionality such as 'on the fly' **grouping**, totaling, **saveable favorites** and a search capability second to none, **INQUIRY for Dynamics SL** is the Ad-Hoc query application that's a must have for every Dynamics SL install.



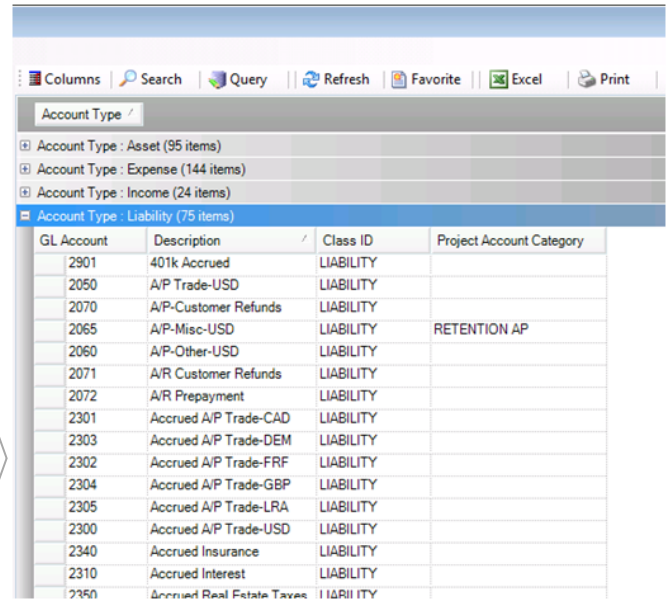
**INQUIRY for Dynamics SL** offers a visual environment loaded with functionality that's intuitive enough to start using immediately with little to no training. With a unique presentation of parent / child data and navigation that makes finding queries fast and logical, its the perfect interface to display the relational data of the Dynamics SL system.



Column Metrics are added automatically to every column giving you access to column information that makes reporting easier.

Here a date field's metrics are displayed allowing the user to instantly add the date field's Year, Quarter, Month and more.

On the fly Grouping, totaling and subtotaling help with quick analysis and put ad-hoc capabilities in the hands of the end user.



The search capability provided by **INQUIRY** offers simplicity to the every day user with friendly field names and search values and an easy to use interface.

For sophisticated users **INQUIRY** offers power features including nested parenthetical restrictions, "And/Or" operators and an interface capable of creating a search as complex as a hand written SQL WHERE clause.

